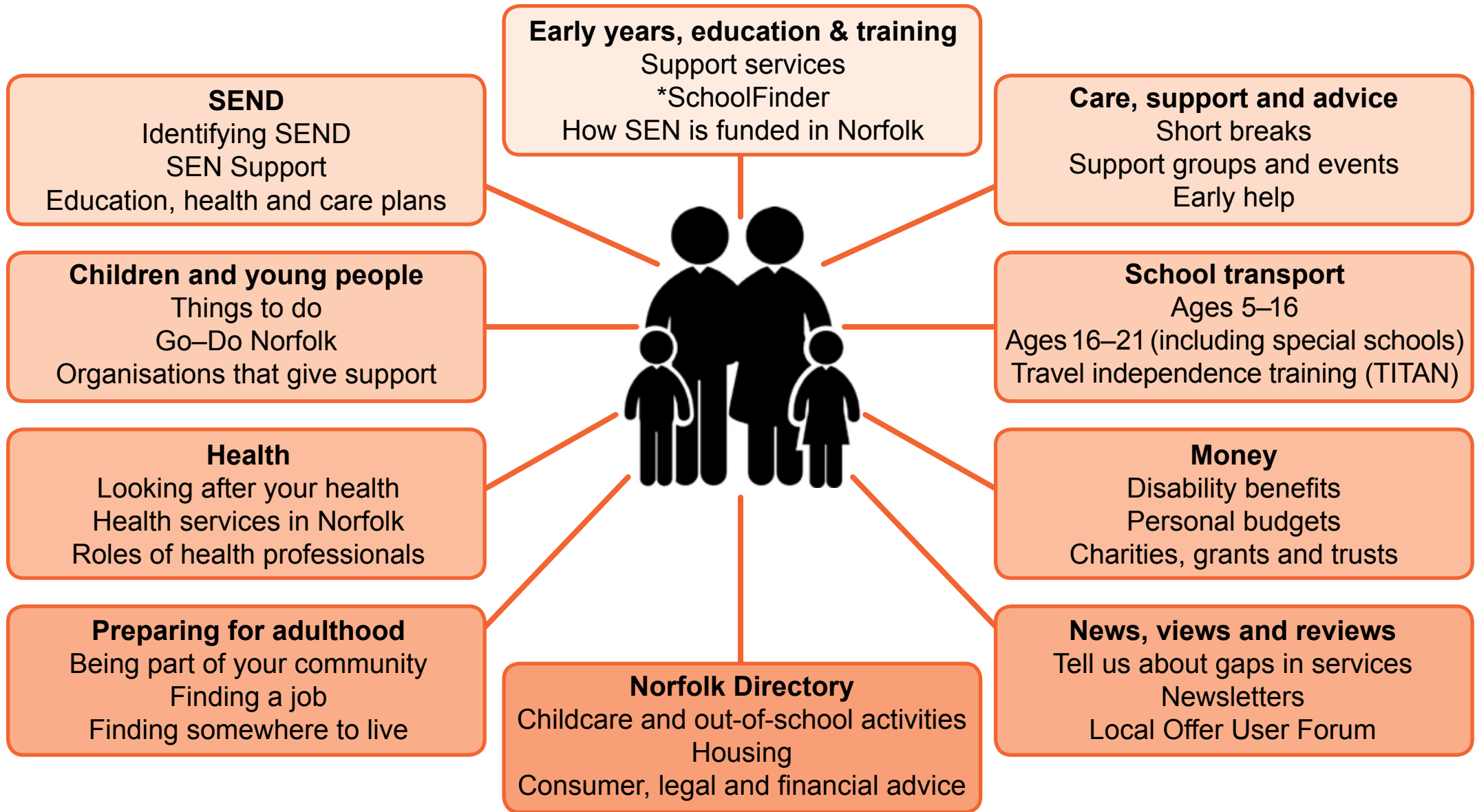


## A taste of what you can find in the Local Offer



To find out more visit [www.norfolk.gov.uk/send](http://www.norfolk.gov.uk/send)

\*Links to school SEN Information Reports, which set out what SEN provision you can expect from your school.

## What can you use Norfolk's Local Offer for?

### Finding information you need now:

- SEND processes
- Services in your area
- Contacts
- Support groups.

### Planning ahead:

- Moving house
- Changing school
- Thinking about post-16 options
- Preparing for adulthood.

### Feedback about gaps in services:

- Share your views and needs
- Inform future commissioning.

## Have your say – help us improve!

You can have your say about Norfolk's Local Offer by:

- Email: [send@norfolk.gov.uk](mailto:send@norfolk.gov.uk)
- Go to the Local Offer "Tell us what you think" page
- Participation: join the Local Offer User Forum.

---

This leaflet is part of a series of leaflets that cover:

- Joint commissioning
- **The Local Offer**
- Special educational needs (SEN) support
- Education, health and care (EHC) plans
- Personal budgets
- Preparing for adulthood.

## The Local Offer



The Local Offer is a one-stop shop for all the information you need about special educational needs and disabilities (SEND) in Norfolk.

Find it at [www.norfolk.gov.uk/send](http://www.norfolk.gov.uk/send)

The Local Offer has two main purposes:

- To provide clear, comprehensive, accessible and up-to-date information about the available provision and how to access it
- To enable children and young people, their parents, carers and professionals who work with them to influence the development and review of provision so it is responsive to local needs and aspirations.